

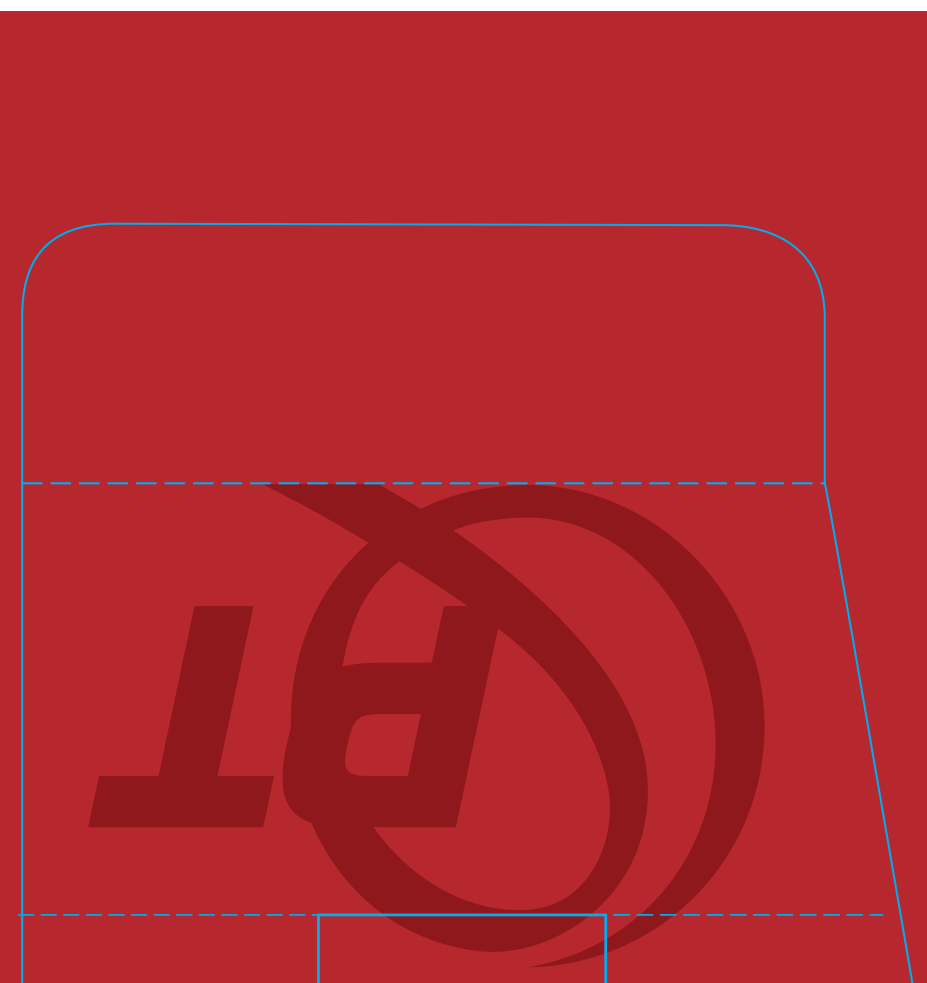
THIS IS PERFORMANCE TUNED



SM25XPT

PT TECH & FEATURES

SM25XPT



PT SPECIFICATIONS

SM25XPT

11+1 PT Bearings
(3 PTAC, 8 BB, 1RB)

6.0:1 Gear Ratio

1-Piece Aluminum Frame

Weight: 8 oz.

Retrieve Rate (I.P.T.): 38"

Max Drag: 18lbs

Mono Line Capacity:
150 yds./8 lbs. 140 m./26 mm

Braid Line Capacity:
160 yds./20 lbs.

PERFORMANCE TUNED™

SM25XPT

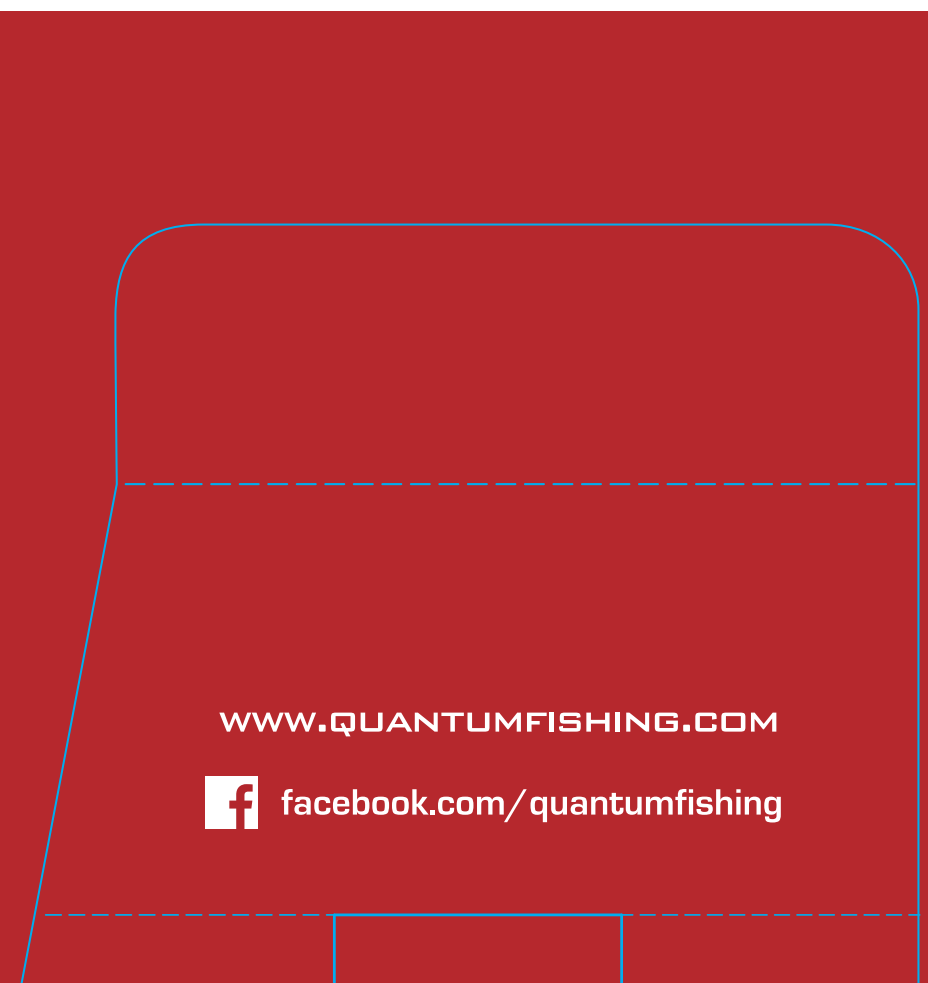


©2018 W.C. Bradley/Zebco Holdings, Inc. Tulsa, OK 74115
Manufactured in China to strict quality standards. QUANTUM is a trademark of W.C. Bradley/Zebco Holdings, Inc. For patent and trademark info, see www.zebco.com/IP. Parts, exploded view, manual and warranty info see: www.quantumfishing.com

For California residents / Pour Californie habitants
Para residentes de California
WARNING: This product contains a chemical known to the State of California to cause cancer, birth defects, and other reproductive harm.

Die Line

Fold



WWW.QUANTUMFISHING.COM

facebook.com/quantumfishing



PT SPECIFICATIONS

SM25XPT

11=1 PT Roulements / Cojinetes

6.0:1 Relación de Engranaje
Rapport d'Engrenage

Cadre Aluminium 1 Pièce
Marco de aluminio de 1 pieza

Poids / Peso: 227 g.

Récupérer Taux / Recuperar Índice: 81cm

Max Drag: 25lbs

Capacité / Capacidad:
150 yds./8 lbs. 140 m./26 mm

Tressage Capacité / TrenzaCapacidad:
150 yds./8 lbs.

PERFORMANCE TUNED™

FOIL STAMP AREAS

ALL "QUANTUM" "S3" SERIES THREE" & "THIS IS PERFORMANCE TUNED" ARE TO BE FOIL STAMPED.

ALL "PERFORMANCE TUNED PT" & "SMOKE" ARE TO BE BLACK FOIL STAMPED.



PMS 1805 **FOIL**



BLACK **FOIL**

